



Model Overview and Evidence

Dan Herman
Sarah Conover
Ezra Susser

Columbia University &
New York State Psychiatric Institute

Research support provided by
National Institute of Mental Health
New York State Office of Mental Health
Columbia University Mailman School of Public Health

CTI aims to solidify supports as it spans the period of transition



CTI →



CTI differs from traditional case management



Time limited



Focused



Three phases

Focus is on selected risk areas

- Psychiatric treatment and medication management
- Money management
- Housing crisis management
- Substance abuse
- Family psychoeducation

Phase One:
Transition

Implement transition plan while providing emotional support

- Home visit
- "Introduce" clients to providers
- Meet with caregivers
- Substitute for caregivers
- Help negotiate ground-rules for relationships
- Mediate conflicts
- Assess potential of support system

Phase Two:
Try-Out

Facilitate and test client's problem-solving skills and capacity of the support system

- Monitor effectiveness of support system
- Modify as necessary
- Less frequent meetings
- Crisis intervention and troubleshooting

Phase Three:
Transfer of Care

Phase 1
Terminate CTI services with support network safely in place

- Consultation but little direct service
- Ensure key caretakers meet and agree on long-term support system
- Formally recognize end of intervention and relationship



Fort Washington Armory
Susser, Valencia, et. al. 1997

Design

- randomized trial
- 100 men with SMI following discharge
- 9-month intervention/ 18-month follow-up

Results

- 3-fold reduction in risk of homelessness
- Effect persisted beyond 9 months



CTI in the Transition from Hospital to Community
Herman, Susser & Conover, unpublished

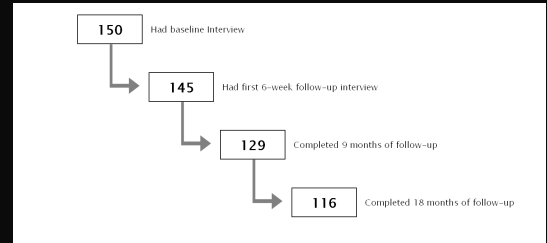
Design

- randomized trial
- 150 men & women with SMI following discharge
- 9-month intervention / 18-month follow-up

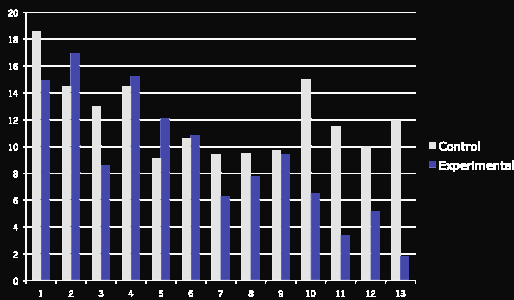
Sample

- 75% males
- 60% African-American
- Multiple homeless episodes and hospitalizations
- Schizophrenia or schizoaffective disorder
- Substance use

Follow-up



Percent of subjects who were homeless over 18 months (ITT)

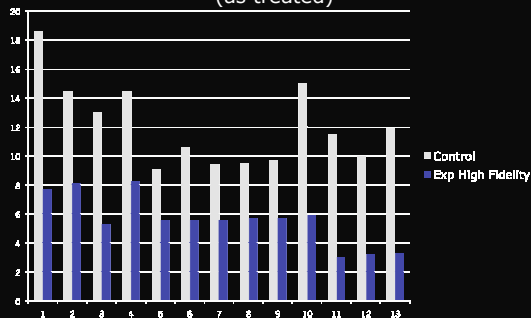


- Effect of intervention on risk of homelessness during last three follow-up intervals*

$$OR = 0.22 (.06, .88)$$

* Logistic model, adjusting for baseline homelessness

Percent of subjects who were homeless over 18 months (as treated)



- Impact of "high fidelity" intervention on risk of homelessness during last three follow-up intervals*

$$OR = 0.10 (.03, .35)$$

* IV analysis using two-stage model, group assignment as instrument and high fidelity intervention as treatment, adjusting for baseline homelessness

adapting the model?



www.criticaltime.org

dbh14@columbia.edu

Demographic

Characteristics

	Total Sample	Experiment	Control
Male	71.3	67.5	75.3
Female	28.7	32.5	24.7
Age			
18-29	22	24.7	19.2
30-39	34	32.5	35.6
40-45	24	24.7	23.3
46 plus	20	18.2	21.9
Ethnicity			
African-American	62	62.3	61.6
Latino	15.3	14.3	16.4
White	16.7	18.2	15.1
Other	6	5.2	6.8

Diagnosis

	Total	Experiment	Control
Schizophrenia	61.3	62.3	60.3
Schizoaffective	34.7	31.2	38.4
Other	4.0	6.4	1.4
Substance abuse			
No use or	10	10.4	9.6
Use w/o abuse or dependence	10	15.6	4.1
Abuse w/o dependence	26.7	23.4	30.1
Dependence	53.3	50.6	56.2

Lifetime homelessness

	Total	Experiment	Control
Times homeless			
One	21.1	24	18.1
2 to 4	44.9	38.7	51.4
5 to 9	20.4	24	16.7
10 or more	13.6	13.3	13.9
Longest episode			
LT one week	9	9.3	8.6
One week to 3 months	22.1	21.3	22.9
3 months to one year	29	25.3	32.9
One year or more	40	44	35.7
Age first homeless (mean)	25.8	25.1	26.6

Recent homelessness

	Total	Experiment	Control
Homeless nights during previous three months			
None	18.2	14.5	22.2
1-7	13.5	14.5	12.5
8-29	13.5	14.5	12.5
30-89	16.9	23.7	9.7
90	37.3	32.9	43.1

Treatment history

	Total	Experiment	Control
Lifetime psychiatric			
One	9	13.2	4.3
Two to four	20.7	21.1	20.3
5 to nine	32.4	36.8	27.5
10 or more	38	28.9	48.8
Outpatient commitment			
Current or pending	8.2	6.6	9.8
Past	6.1	6.6	5.6
Never	85.7	86.8	84.5

Criminal justice involvement

	Total Sample	Experimental	Control
Times in jail or			
None	21.4	20	22.9
One	26.9	29.3	24.3
2 to 4	29	33.3	24.3
5 or more	22.3	17.3	28.6
Currently on probation or parole	6.1	6.5	5.6

Length of stay

	Total	Experiment	Control
Time in transitional			
Less than one	4	3.9	4.1
1 to 3 months	34	32.5	35.6
4 to 6 months	34	35.1	32.9
6 months to one	19.3	22.1	16.4
More than one year	8.7	6.5	11